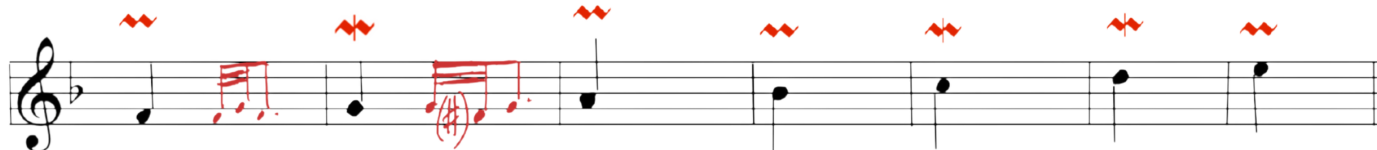


ORNAMENTATION EXERCISES

SAMPLE EXERCISE SHEET - ORNAMENT REVIEW

Mordent **Inverted Mordent**

Fill in the blanks according to the symbol



Turn (Grupetto)

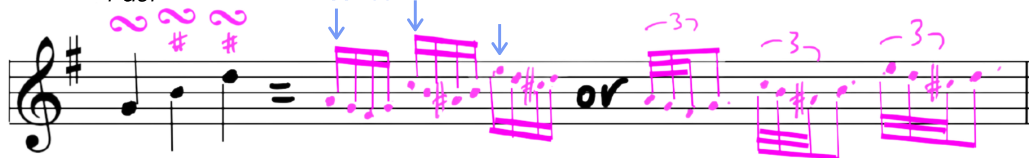
Moderate

Slow



Fast

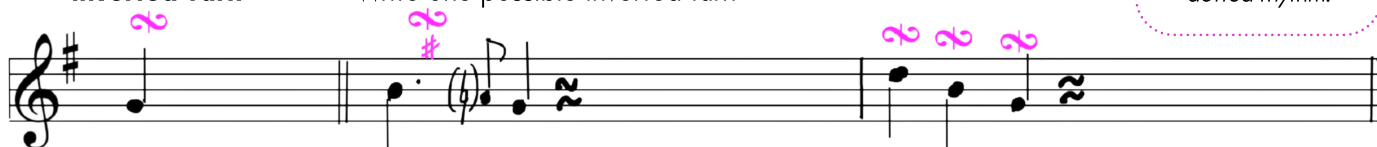
appoggiatura



The rhythm of the turn is dependent on tempo, and can range from a languid quintuplet to a vibrant dotted rhythm.

Inverted Turn

Write one possible inverted turn



Trill

Possible Nachschläge

Write your own Nachschläge

Acciaccatura

appoggiatura



Appoggiatura Upper (fill in the blanks)

Lower (fill in the blanks)



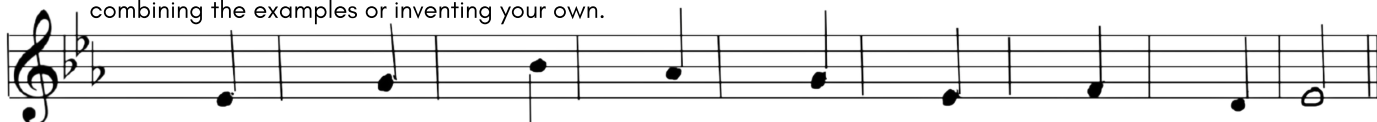
Double appoggiatura

Schleifer

Appoggiatura Variations/Substitutes



Add appoggiaturas and appoggiatura variations in the first beat of each of the following measures, combining the examples or inventing your own.



Using the skeleton (the unornamented melody) provided in the system above, create a melody by combining different ornaments.

