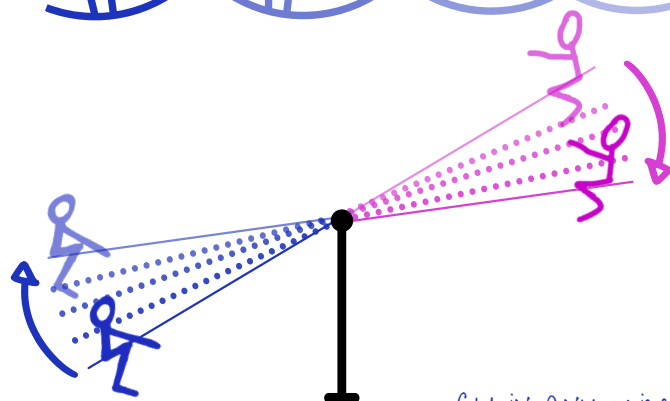
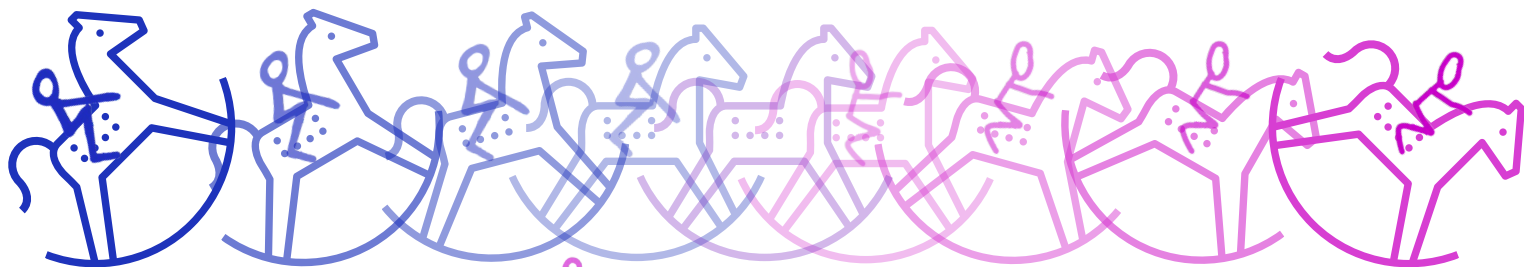


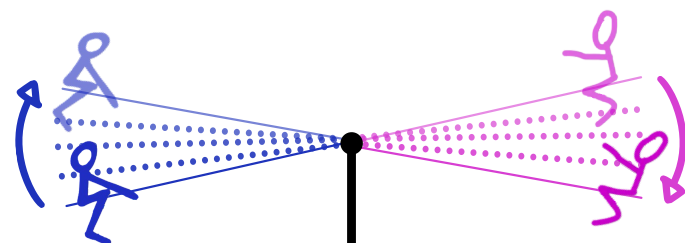
BECOME THE MVP OF THE MDV

The Dynamic Pony



C4

C4 in any voice should probably be chest dominant though adding head will make it softer

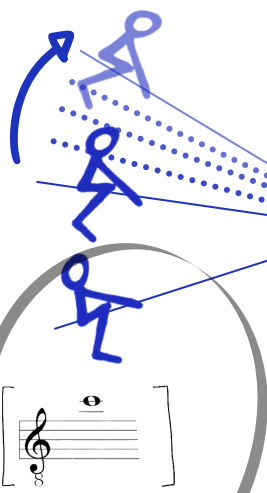


F4

F4 in any voice can be head or chest dominant

C5 in treble voices will always be head dominant in bel canto singing, though adding a bit of chest will make it louder. be careful!

tenors, however, can bring the chest dominance to C5 and higher!



"do di petto"
tenor high C



C5

soprano/mezzo

are you chest dominant or head dominant?

do you know where you switch?

what is possible where?